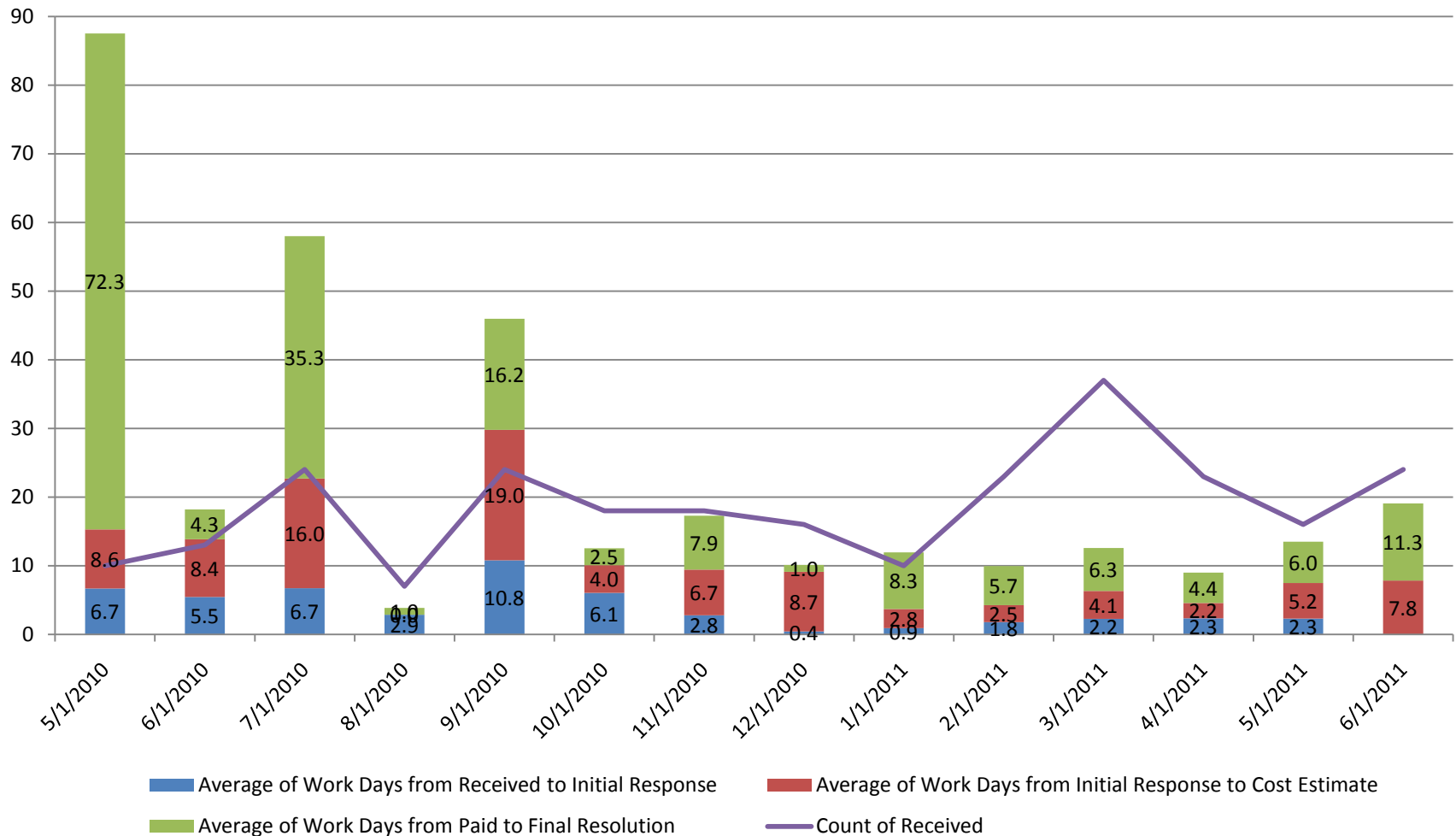


Public Records Request Timelines

Days waiting for payment removed

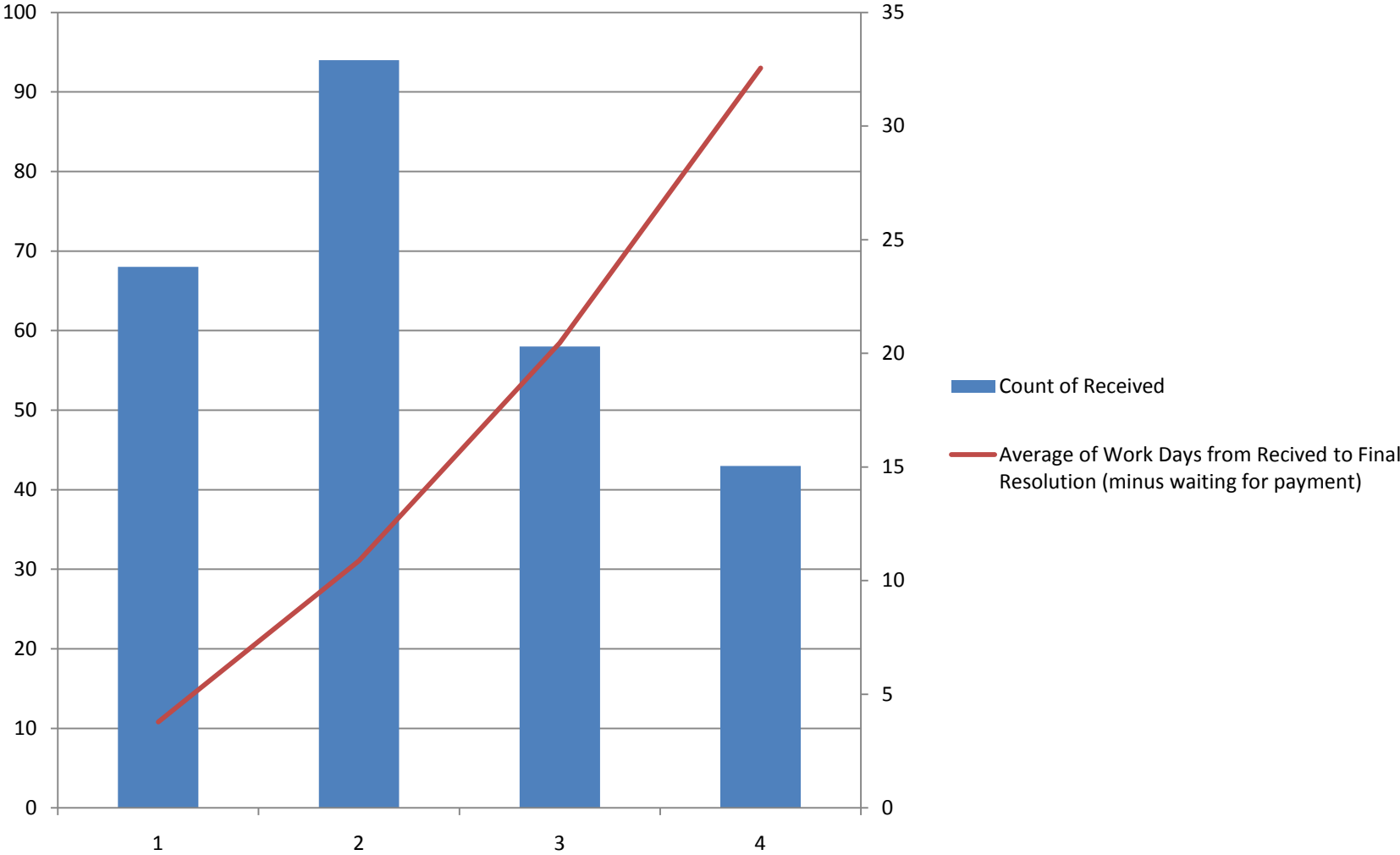


Explanation of Complexity Ratings

- **Level 1:** Office has responsive records prepared to deliver.
- **Level 2:** Office can easily and quickly collect records from one or two campus locations; responsive records require minimal redaction.
- **Level 3:** Responsive records require redaction and/or the Office of the General Counsel's advice.
- **Level 4:** Office collects records from multiple campus sources; responsive records are difficult to locate or require forensic production; documents require complex processing and/or redaction; advice required from the General Counsel.

Count and Days to Final Resolution

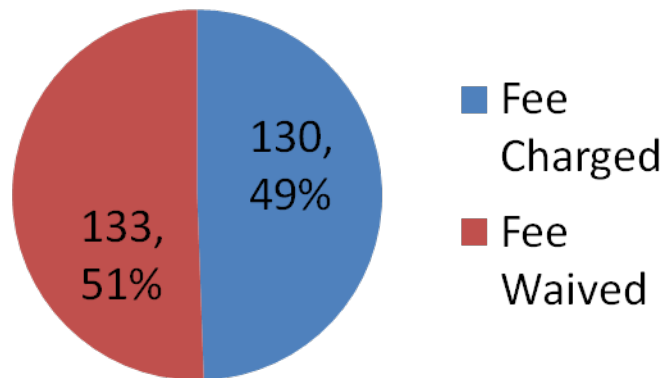
by Complexity Category



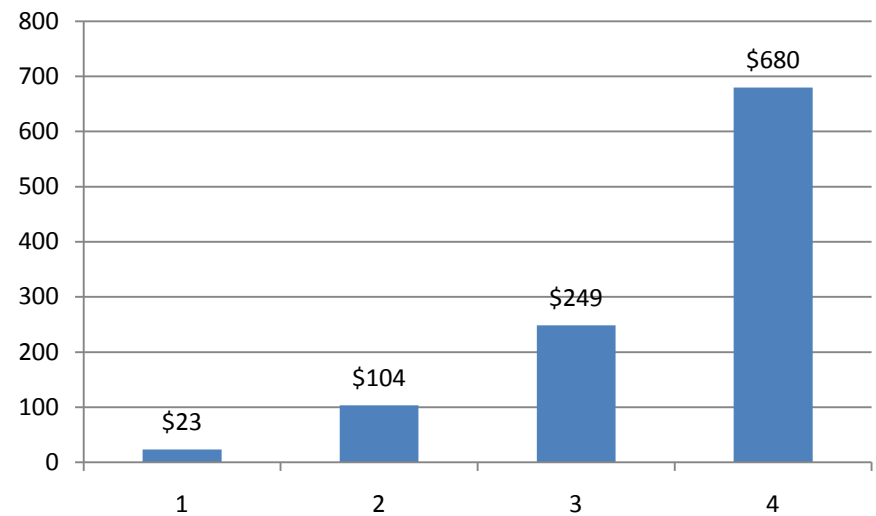
Public Records Requests

Fees

Fees Charged



Average Charge by Complexity



Of the 130 that were charged a fee:

- 74 paid (The remainder have either been withdrawn or are still open pending payment).

- 96 were \$200 or less